



# GMT MONTHLY MEMBERSHIP PROGRESS REPORT

Results as of: 5/31/2018

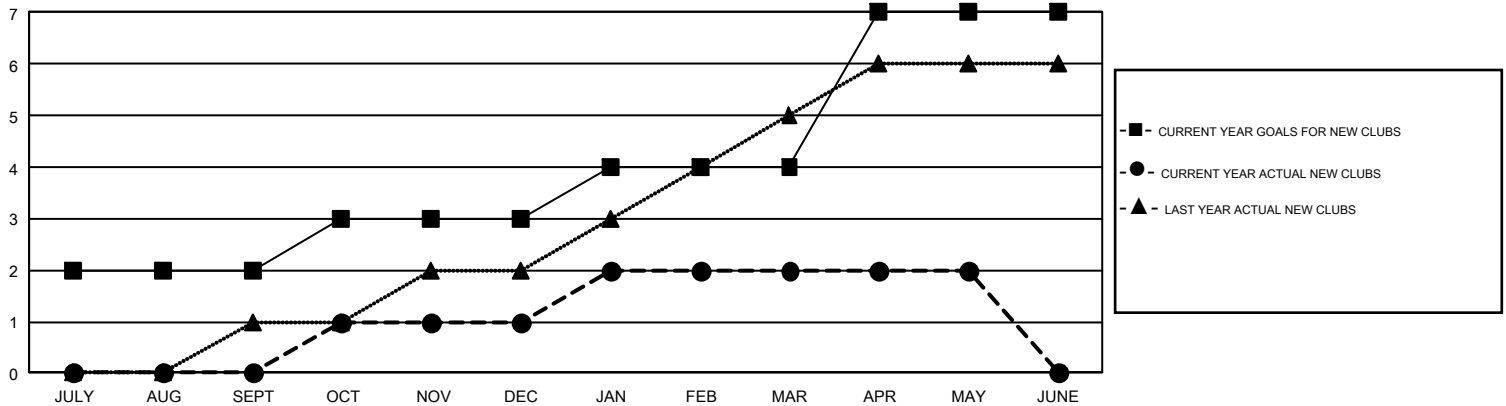
## GMT Constitutional Area 6-Afr, Group J

GMT: RASHMI KOOVERJEE

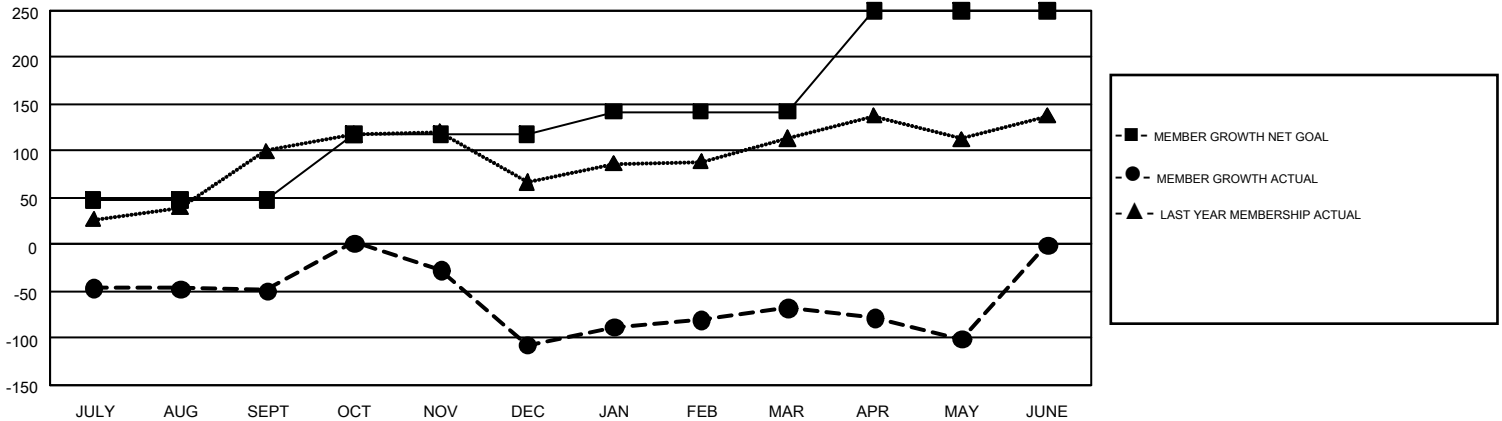
REPORT DOES NOT INCLUDE CLUBS IN UNDISTRICTED AREAS.

Clubs				Members			
RESULTS FOR 2017-2018				RESULTS FOR 2017-2018			
QUARTER	NEW CLUB GOAL	NEW CLUBS	DROPPED CLUBS	QUARTER	MEMBER GROWTH NET GOAL	MEMBER GROWTH ACTUAL	DROPPED MEMBERS ACTUAL (including transfers)
JULY/AUG/SEPT	2	0	1	JULY/AUG/SEPT	48	60	100
OCT/NOV/DEC	1	1	2	OCT/NOV/DEC	70	103	155
JAN/FEB/MAR	1	1	1	JAN/FEB/MAR	24	132	71
APR/MAY/JUNE	3	0	0	APR/MAY/JUNE	108	68	93

GOALS AND ACTUAL NEW CLUBS CUMULATIVE



GOALS AND ACTUAL MEMBERS CUMULATIVE



DROPPED CLUBS: 4	76 CLUBS OF 149 ADDED 1 OR MORE NEW MEMBERS	<b>GENDER DISTRIBUTION</b> MALE                    1,306 (56.91%) FEMALE                   989 (43.09%)
<b>DROPPED MEMBERS</b> DECEASED                    22 CLUB CANCELLED               21 OTHER                            375 <hr/> TOTAL                            418	<a href="#">CLICK HERE FOR CUMULATIVE MEMBERSHIP DATA</a>	TOTAL FAMILY UNIT MEMBERS                    690  FAMILY MEMBERS PAYING HALF DUES                    354